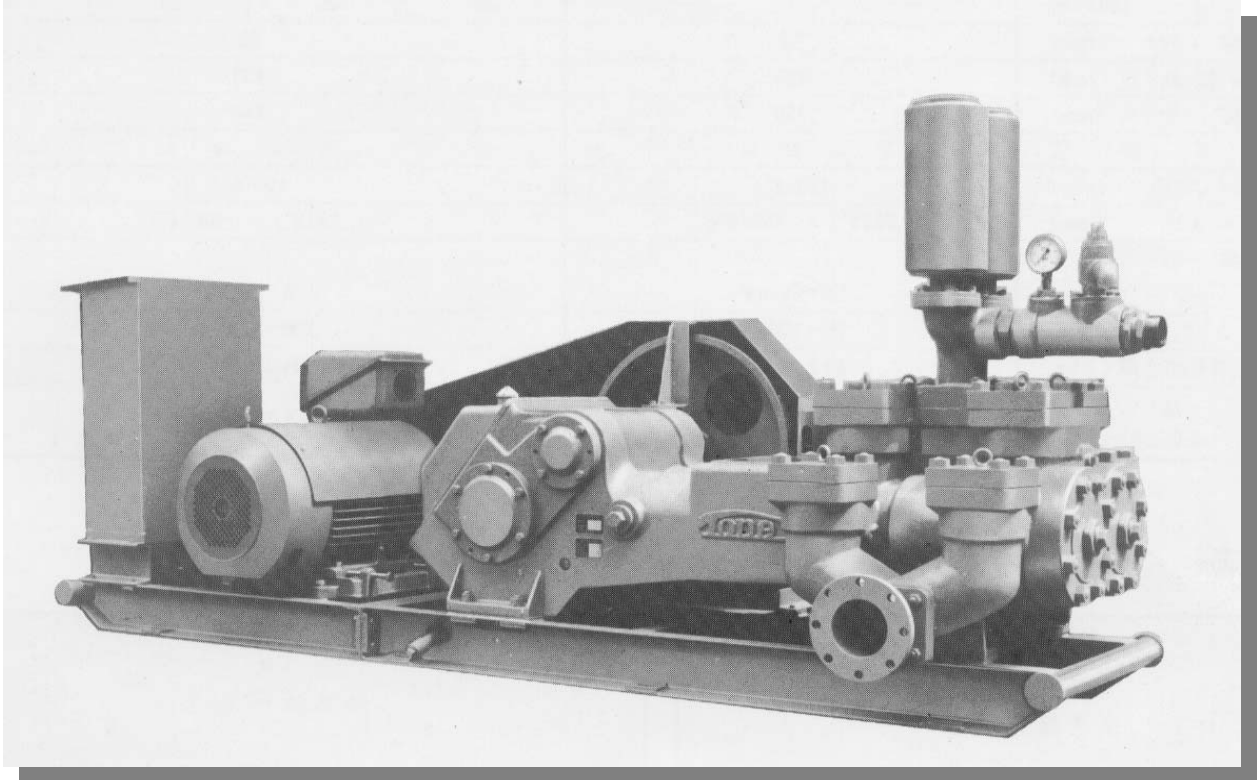


DRILLING FLUID CIRCULATION & GROUT PUMP

NAS-7



**"NAS" SERIES HEAVY DUTY PUMP DESIGNED FOR
WIDER DRILLING APPLICATIONS IN MINING, DEEP
WATER WELL AND CONSTRUCTION FIELDS
REQUIRING HIGH PRESSURE AND LARGER
DISCHARGE VOLUME WITH RELIABLE PERFORMANCE**



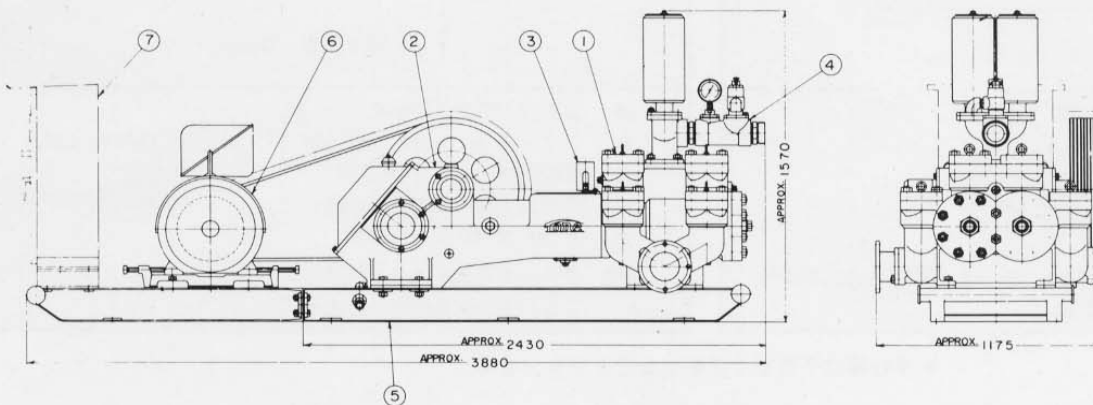
TOA-TONE BORING CO., LTD.

NAS-7

HIGH PRESSURE PUMP

Type	Duplex double acting piston.		
Cylinder Bore	190.5 mm (7-1/2")	171.5 mm (6-3/4")	
Discharge Volume	1,500 Liter per minute		1,200 Liter per minute
Max. Pressure	at 70 PS	1.67 Mpa (17 kg/cm ²)	2.06 Mpa (21 kg/cm ²)
	at 90 PS	1.96 Mpa (20 kg/cm ²)	2.45 Mpa (25 kg/cm ²)
	at 100 PS	2.16 Mpa (22 kg/cm ²)	2.74 Mpa (28 kg/cm ²)
No. of Stroke	92 RPM.		
Length of Stroke	150 mm.		
Type of Valve	Conical		
Suction Hose Size	150 mm.		
Discharge Hose Size	75 mm.		
Required Horse Power	75 - 100 PS for diesel engine		
	55 - 75 kW for electric motor		
Dimensions (w/ electric motor)	3,380 mm (L) x 1,100 mm (W) x 1,620 mm (H)		
Weight (w/o prime mover)	Approx. 2,450 kg		

* In accordance with our policy of constant improvement of the products, we reserve the right to amend design, materials, specifications and prices at any time without notice.



- ① Valve Box
- ② Crank Case
- ③ Lubricator
- ④ Delivery Line
- ⑤ Skid Base
- ⑥ Prime Mover
- ⑦ Switch Stand for electric motor



TOA-TONE BORING CO., LTD.

3-7 Roppongi 7-chome, Minato-ku, Tokyo 106-0032, Japan
 Phone: 03-5775-3921 Fax: 03-5775-3967
 URL: <http://www.toa-tone.jp>

PT. DJAWA BARU

Jl. Prof. Dr. Soepomo, SH. 45F Jakarta 12810, Indonesia
 Phone: +62-21-829-8401 Fax: +62-21-829-8373
 HP: +62-852-1679-9191 Email: support@djawabaru.co.id

